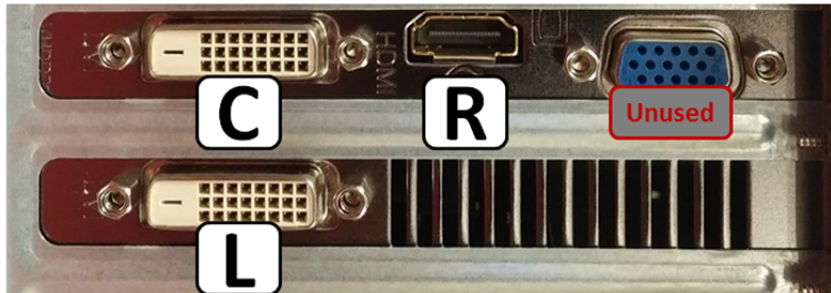


17. Horizon Monitors

- a. Turn the computer off and install the Horizon monitors using the provided frame and bracket. Hook the video cables up according to the following diagram:

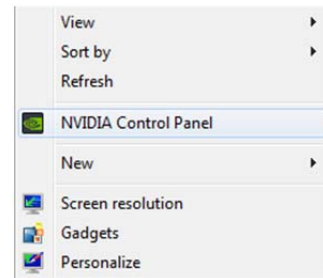
TD Horizon Video Cable Diagram



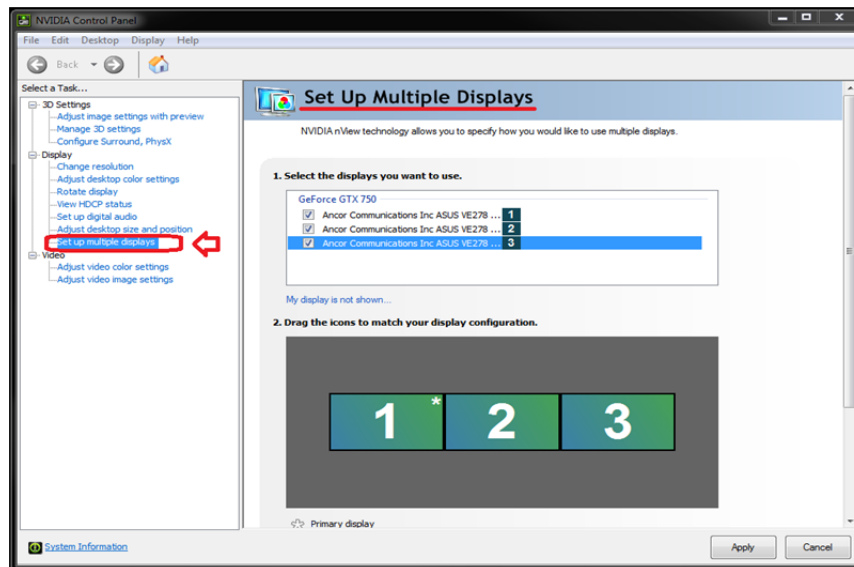
C – Center | R – Right | L – Left

- b. Boot up the computer when the horizon monitors are properly installed and hooked up.
- c. Close the TDWelcome software (click on the TDWelcome background, then use the keyboard shortcut **Alt+F4**).

- d. Right click anywhere on the desktop (background) and select **NVIDIA Control Panel**. →



- i. Navigate to the **“Set Up Multiple Displays”** menu (using the navigation panel on the left side of the NVIDIA Control Panel).



- ii. Identify which monitor is assigned which number by right clicking on each of the displays in the lower section of the multiple display menu, and selecting Identify; the monitor you selected should then display a large white number:

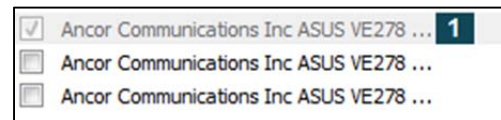
- Default settings:
 #1 – Center Display
 #2 – Left Display
 #3 – Right Display



**Note – Like in the picture above, the displays may be out of order in the lower portion of the screen; this is normal as long as their logical numbers match the default above.*

- iii. If your display numbers do not match the default settings above, follow the instructions below;

- In the top section of the multiple display menu, uncheck the boxes next to the **Left** and **Right** displays, and then hit the **Apply** button.*



**Note – When you hit apply, the Left and Right displays should go dark; the only display that should be showing anything right now should be the center display.*

- Check the box next to the **Left** display, and then hit the **Apply** button.*



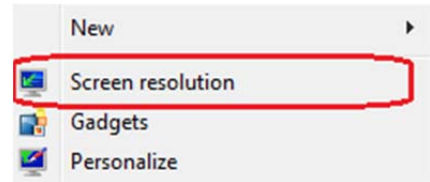
**Note – When you hit apply, the Left display should turn on.*

- Check the box next to the **Right** display, and then hit the **Apply** button.*



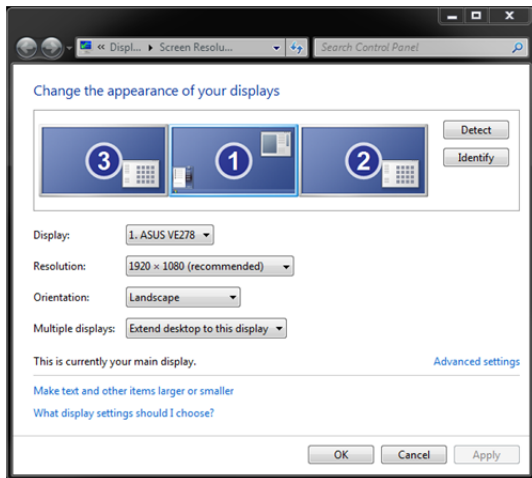
**Note – When you hit apply, the Right display should turn on and start displaying the background; all displays should now be on.*

- iv. After re-attaching the monitors in the correct order (*step iii*), the logical numbers of the displays should now match the default (*from step ii*). Close the **NVIDIA Control Panel**, and right click on the desktop (background) again but this time select **Screen Resolution**.



- v. In the **Screen Resolution** menu, click the **Identify** button and large white numbers should appear on all of the displays. Move the pictures of the monitors around in the **Screen Resolution** menu to match how the numbers come up.*

e.g.:



*Note: The white numbers that your TD displays do not necessarily have to match the example above, as long as the order of the numbers that appear when you hit **Identify** matches the order of the numbers in the **Screen Resolution** menu.

- vi. Select each of the displays, and make sure the **Resolution** drop-down menu is set to display at 1920 x 1080 (recommended), and the **Orientation** is set to Landscape.



- vii. Start the **TDWelcome** software and launch a test flight to make sure that the monitors display the correct images in flight.